





Crowther|Key

SALES


£54,995

 2

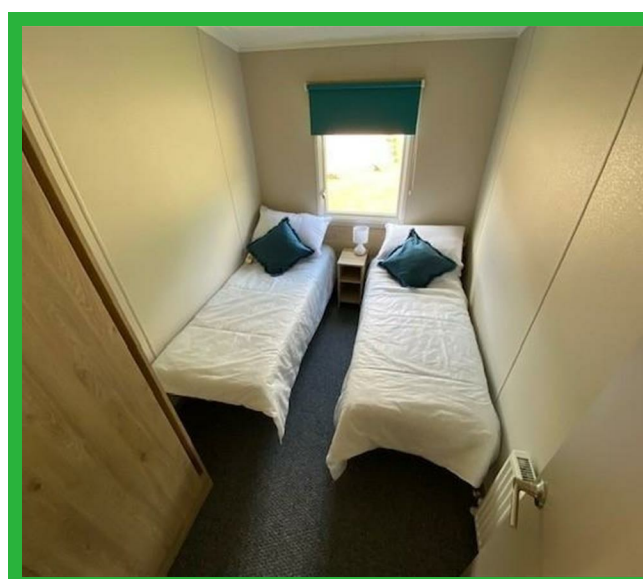
 0



Victory Lifestyle - New
Buxton SK17 0DT

Energy Efficiency Rating		
	Current	Potential
Very energy efficient - lower running costs		
(92 plus) A		
(81-91) B		
(69-80) C		
(55-68) D		
(39-54) E		
(21-38) F		
(1-20) G		
Not energy efficient - higher running costs		
England & Wales	EU Directive 2002/91/EC	

CALL US ON 01298 214441 OR EMAIL sales@crowtherkey.co.uk



VICTORY LIFESTYLE - NEW 2BEDS SLEEPS 6 35FT X 12FT

Welcome to the Brand New Victory Lifestyle – Your Dream Holiday Home is Here! The perfect escape awaits you at Newhaven Holiday Park, where the beauty of nature meets the comfort of modern living. The brand-new Victory Lifestyle is designed with your relaxation and enjoyment in mind, offering everything you need to make the most of your holiday time.

VICTORY LIFESTYLE - NEW 2BEDS SLEEPS 6 35FT X 12FT

Welcome to the Brand New Victory Lifestyle – Your Dream Holiday Home is Here! The perfect escape awaits you at Newhaven Holiday Park, where the beauty of nature meets the comfort of modern living. The brand-new Victory Lifestyle is designed with your relaxation and enjoyment in mind, offering everything you need to make the most of your holiday time.

Included offers & benefits

- Cooker
- Corner sofa
- Dining Table With Benches
- Double Glazing & Central Heating
- Family Bathroom
- Fridge Freezer
- Fully Fitted Kitchen
- L-Shaped Sofa
- Light & Airy
- Microwave
- Open-Plan Living Area
- Sofa Bed In Lounge
- Wrap-Around Seating
- A Superfast Internet Package*
- Free 2026 Pitch Fees

Situated on the New Haven Holiday Park. Open 10.5 months of the year
Newhaven is the perfect spot for exploring the Derbyshire countryside. Ideal for the kids, the play area is great for running off some energy. Stock up on essentials at the on-park shop. Some activities could incur additional charges, or only be open at peak times.

Misrepresentation Act 1967 \ Consumer Protection from Unfair Trading Regulations 2008 and the Business Protection from Misleading Marketing Regulations 2008

Every care has been taken with the preparation of these Particulars but complete accuracy cannot be guaranteed. If there is any point, which is of particular importance to you, please obtain professional confirmation; alternatively, we will be pleased to check the information for you. We have not tested any apparatus, equipment, fixture, fittings or service and so cannot verify they are in working order, fit for their purpose, or within ownership of the sellers. Items shown in photographs are NOT included unless specifically mentioned in writing within the sales particulars. They may however be available by separate negotiation.

These details are prepared as a general guide only, and should not be relied upon as a basis to enter into a legal contract, or commit expenditure. An interested party should consult their own surveyor, solicitor or other professionals before committing themselves to any expenditure or other legal commitments. If any interested party wishes to rely upon any information from the agent, then a request should be made and specific written confirmation can be provided. The agent will not be responsible for any verbal statement made by any member of staff, as only a specific written confirmation should be relied upon. The agent will not be responsible for any loss other than when specific written confirmation has been requested.

All Dimensions are approximate. Items shown in photographs are NOT included unless specifically mentioned in writing within the sales particulars. They may however be available by separate negotiation.

Misrepresentation Act 1967 and Consumer Protection Regulation

These details are prepared as a general guide only, and should not be relied upon as a basis to enter into a legal contract, or commit expenditure. An interested party should consult their own surveyor, solicitor or other professionals before committing themselves to any expenditure or other legal commitments. If any interested party wishes to rely upon any information from the agent, then a request should be made and specific written confirmation can be provided. The agent will not be responsible for any verbal statement made by any member of staff, as only a specific written confirmation should be relied upon. The agent will not be responsible for any loss other than when specific written confirmation has been requested.